

GMO Resource Transition Fund
Class VI (GMOYX)
Annual Shareholder Report - February 28, 2025



This annual shareholder report contains important information about GMO Resource Transition Fund for the period of March 1, 2024 to February 28, 2025. You can find additional information about the Fund at <https://www.gmo.com/americas/mutual-fund-documents/>. You can also request this information by contacting us at (617) 346-7646 (collect).

What were the Fund costs for the last year?
(based on a hypothetical \$10,000 investment)

Class Name	Costs of a \$10,000 investment	Costs paid as a percentage of a \$10,000 investment
Class VI	\$78	0.86%

How did the Fund perform last year and what affected its performance?

Although the Fund is not managed relative to any securities market index or benchmark, a discussion of the Fund’s performance relative to the MSCI All Country World Index (“ACWI”) Commodity Producers ex-Energy is included for comparative purposes.

Class VI shares of GMO Resource Transition Fund returned -18.78% (net) for the fiscal year ended February 28, 2025, as compared with +2.01% for the MSCI ACWI Commodity Producers ex-Energy.

The Fund’s industrial metals portfolio, the largest segment by weight, fell in absolute terms and also underperformed the benchmark. Within the metals portfolio, larger than the benchmark positions in lithium detracted from returns, while the copper and platinum group metals portfolios added.

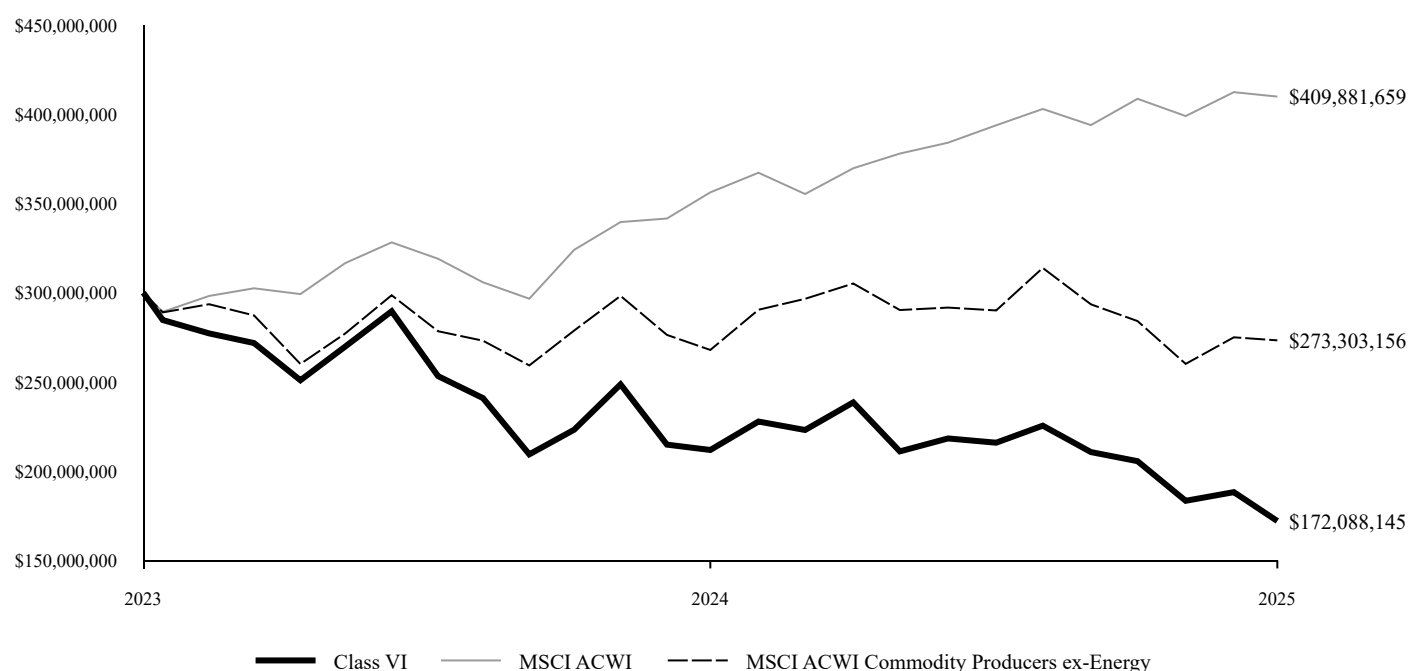
The Fund’s energy portfolio, which is primarily an off-benchmark position in clean energy, detracted as the clean energy sector continued to be pressured by poor sentiment. SolarEdge and Green Plains, two clean energy companies, were the biggest detractors.

The Fund’s agriculture portfolio delivered diversifying stronger absolute return.

The views expressed herein are exclusively those of Grantham, Mayo, Van Otterloo & Co. LLC as of the date of this report and are subject to change. GMO disclaims any responsibility to update such views. They are not meant as investment advice. References to specific securities are not recommendations of such securities and may not be representative of any GMO portfolio’s current or future investments.

Fund Performance

Change in Value of a \$300,000,000 Investment



Average Annual Total Returns

	1 Year	2/15/2023 (commencement of operations)
Class VI	(18.78%)	(23.88%)
MSCI ACWI	15.06%	16.56%
MSCI ACWI Commodity Producers ex-Energy	2.01%	(4.47%)

Performance data quoted represents past performance and is not indicative of future results. The investment return and principal value of an investment will fluctuate so that an investor's shares, when redeemed, may be worth more or less than their original cost. Current performance data may be lower or higher than the performance data provided herein. To obtain performance information up to the most recent month-end, visit www.gmo.com. Performance shown is net of all fees after reimbursement from GMO. Returns would have been lower had certain expenses not been reimbursed during the periods shown and do not include the effect of taxes on distributions and redemptions. The performance information shown above only includes purchase premiums and/or redemption fees in effect as of February 28, 2025.

MSCI data may not be reproduced or used for any other purpose. MSCI provides no warranties, has not prepared or approved this report, and has no liability hereunder.

The gross expense ratio of 0.94% for Class VI is equal to the Total Annual Operating Expenses set forth in the Fund's most recent prospectus dated June 30, 2024. The net expense ratio of 0.86% reflects the reduction of expenses from fee reimbursements. The fee reimbursements will continue until at least June 30, 2025 and may not be terminated prior to this date without the action or consent of the Trust's Board of Trustees. Elimination of this reimbursement will result in higher fees and lower performance.

Key Fund Statistics

Total Net Assets	\$96,211,503
Number of Portfolio Holdings	62
Portfolio Turnover Rate	47%*
Total Advisory Fees Paid, Net	\$943,220

* The portfolio turnover rate excludes investments in GMO U.S. Treasury Fund ("USTF") which is used as a short-term investment vehicle for cash management. The portfolio turnover rate including transactions in USTF during the period was 58%.

What does the Fund invest in? The Fund primarily invested in equity securities at year end.

Country/Region Summary*	% of Investments	Industry Group Summary**	% of Investments
United States	40.4	Materials	52.7
Canada	12.6	Capital Goods	16.0
Brazil	11.5	Energy	11.1
United Kingdom	10.4	Food, Beverage & Tobacco	9.4
Chile	5.1	Semiconductors & Semiconductor Equipment	6.8
Mexico	3.7	Utilities	3.1
France	2.8	Other (each less than 1%)	0.9
Finland	2.7		
Norway	1.9		
Denmark	1.9		
South Africa	1.5		
China	1.3		
Italy	1.2		
Sweden	1.2		
Other (each less than 1%)	1.8		

* Excludes short-term investments and derivative financial instruments, if any.

** Excludes short-term investments, mutual funds and derivative financial instruments, if any.

Additional Information

For additional information about the Fund, including the Fund's prospectus, financial statements, quarterly portfolio holdings and proxy voting information, please visit <https://www.gmo.com/americas/mutual-fund-documents/> or scan the QR code.

Phone: (617) 346-7646 (collect)

